

Technical Data Sheet

PVC wire wrapped screens

Product description:

High filtering capacity coupled with the benefits of PVC material.

Product properties:

- Material: PVC-U
- Construction lengths: 1-3 m
- Connection type: Pipe thread (DN 50 only) or trapezoidal thread (DN 80-DN 300)

Advantages:

- Up to 20% free inlet area
- Minimum slot widths even with large nominal widths
- High strength of shape due to steel-reinforced PVC wire wrapped screen profiles
- Thread connection as per DIN 4925



Physical material properties:

Properties			Test method
approx. modulus of elasticity	N/mm ²	2500 to 3000	DIN EN ISO 178
Notch impact strength at 20 °C for PVC-U normal impact strength approx.	kJ/m ²	3 to 5	DIN EN ISO 179
approx. density	g/cm ³	1.4	DIN 53479
approx. yield stress	N/mm ²	45 to 55	DIN EN ISO 527-2
Impact strength		Max. 10% break	Based on DIN EN ISO 179
approx. Vicat-softening temperature	°C	80	DIN EN ISO 306

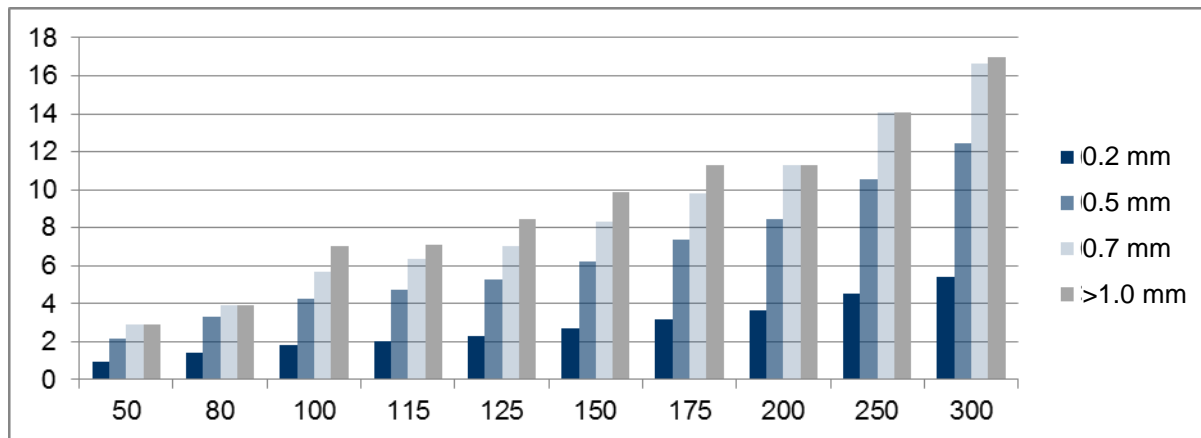
Technical data:

Technical Data Sheet

PVC wire wrapped screens



Screen holding capacity with screen inlet speed of 3 cm/s



Versions

Nominal width [DN]	Filter type	Wall thickness in mm	Connection	Max. exterior Ø in mm	Diameter across wire wrapping in mm	Holding capacity for SW 1.0 in m³/h per m of filter*	Weight in kg/m
50	K/KV	4.0/6.0	R	71	68	2.5	1.8/2.1
80	K/KV	4.0/7.0	T	101	99	4	2.9/3.9
100	K/KV	5.0/7.0	T	129	125	7	3.7/4.7
115	K/KV	5.0/7.5	T	140	137	7	4.2/5.5
125	K/KV	6.5/8.0	T	157	155	8.5	5.4/6.3
150	K/KV	7.5/9.5	T	181	179	9.8	6.9/8.3
175	K/KV	8.5/11.5	T	215	210	11.5	8.9/11.3
200	K/KV	10.0/13.0	T	245	240	11.5	11.3/14.1
250	K/KV	12.5/16.0	T	300	294	14	16.9/21.0
300	K/KV	14.5/19.0	T	358	345	17	22.5/28.7

K = normal wall; KV = reinforced wall

* applies at an inflow velocity of 3 cm/s