

Technical Data Sheet

GWE PolyPile[®] HD-L

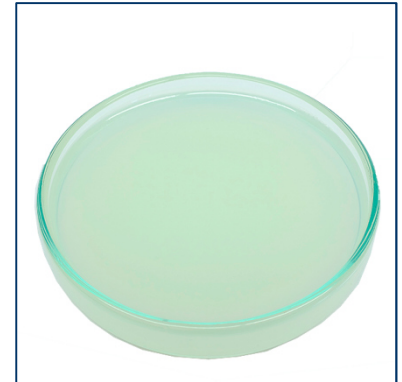


Product description:

High viscous full synthetic PAA polymer in liquid form for the preparation of supporting - and drilling fluids.

Product characteristics:

Composition: copolymer of acrylamide and sodiumacrylate
Appearance: white emulsion
Density: approx. 1030 kg/m³
Ionic charge: anionic



Field of application:

PolyPile[®] HD-L is primarily used as a viscosifier in solid free fluids, respectively in drilling and supporting fluids with low solid content. The polymer inhibits water sensitive sediments and suppresses swelling and dispersing of cuttings. PolyPile[®] HD-L shows a high stability against microbiological degradation and is well reusable over an extended period of time.

Dosage:

In tap water	1m ³ Water
	+ 1-3 kg PolyPile [®] HD-L

In seawater / salt water	1 m ³ Water
	+ 2-5 kg PolyPile [®] HD-L

Typical spud fluid values:

Standard recipe	Marsh funnel out-flow [s]	Density [kg/l]	Water retention time [s]	API water loss [ml]
1m ³ Water + 25 kg PolyPile [®] HD-L	50-60	-	> 400	-

Packaging:

PolyPile[®] HD-L is available in 25 kg canister